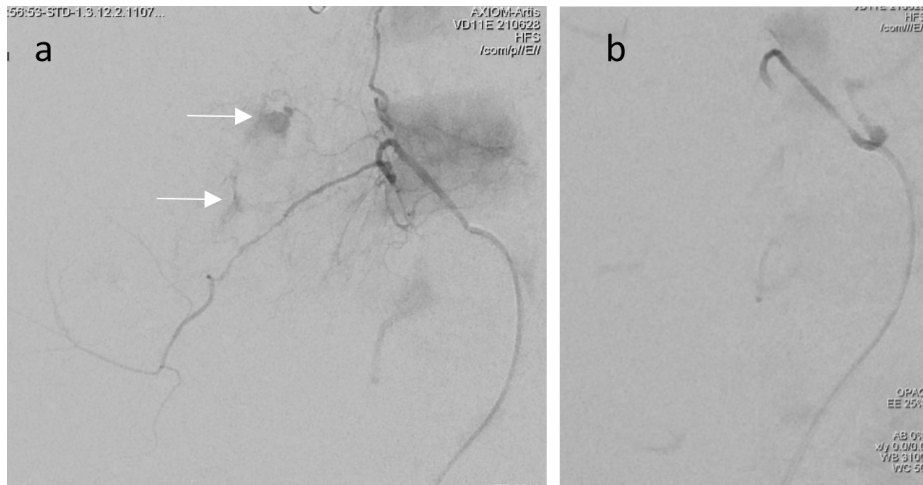


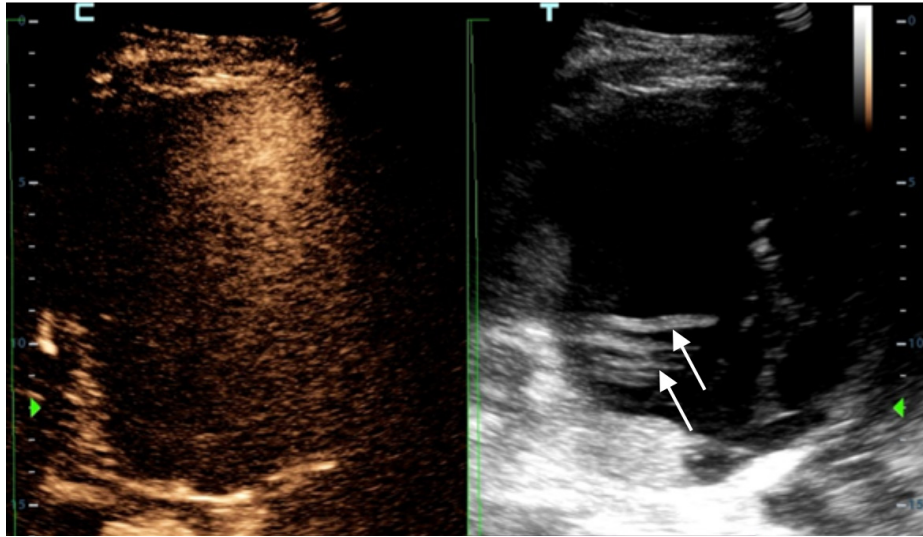
Supplementary images for case 1



Coronal maximum intensity projection of contrast-enhanced computed tomography pre-intervention, shows the large right retroperitoneal hematoma and multiple foci of extravasation.

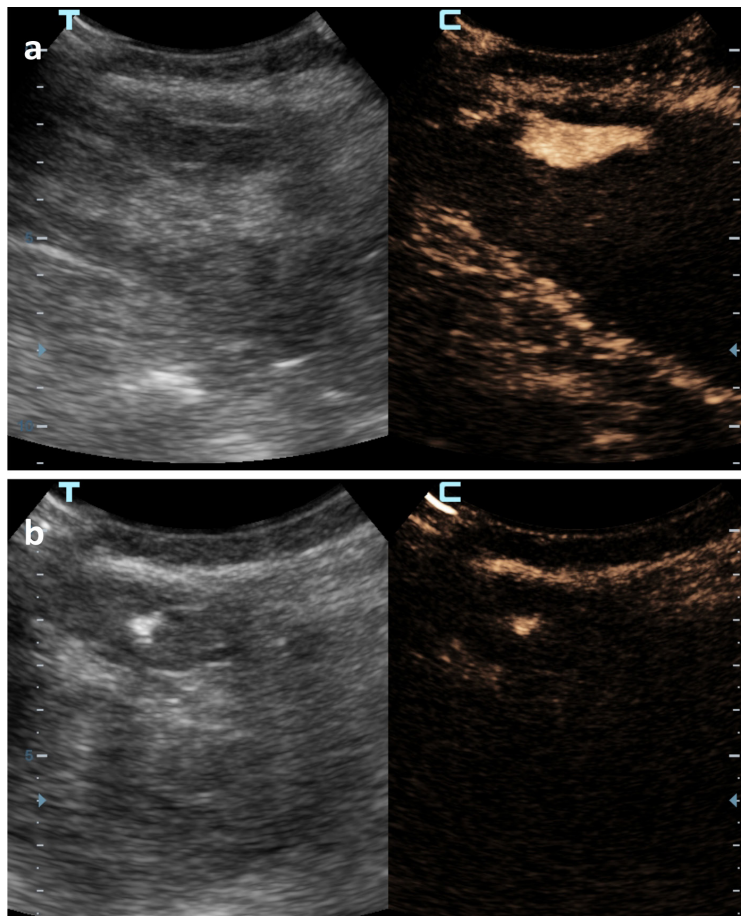


(a) Digital subtraction angiography (DSA) at baseline shows active extravasation from a right superior lumbar artery. (b) DSA post embolization shows complete occlusion of this artery.



Sonographic image (unenhanced, reference gray-scale image on the right, CEUS image on the left) immediately post percutaneous thrombin injection shows no enhancement of the hematoma and newly appearing echogenic thrombotic material (arrows).

Supplementary images for case 3



Sonographic images (unenhanced, reference gray-scale image on the right, contrast-enhanced ultrasound image on the left) before (a) and immediately post PTI (b).