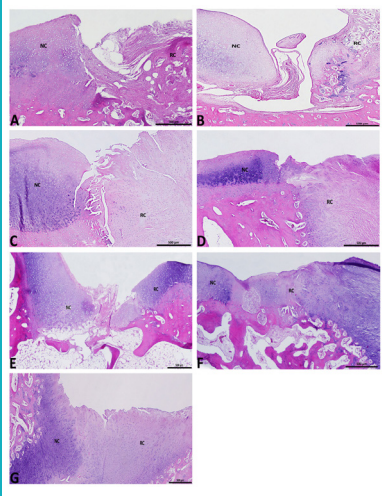
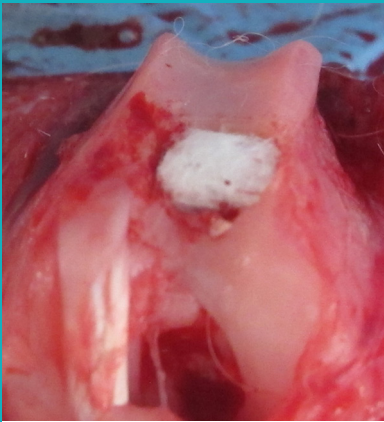




# BEZMİÂLEM science



▼ **Comparison of Small-diameter-hole and Traditional Microfracture in Cartilage Repair and the Effect of Adding a Hyaluronic Acid-based Acellular Matrix Scaffold: An Animal Study**

Vahdet UÇAN, Fatih YILDIZ, Nuh Mehmet ELMADAĞ, Gökçer UZER, Yunus GÜZEL, Olgü Enis TOK, Mukaddes EŞREFOĞLU; İstanbul, Ordu, Turkey

▼ **Development and Validation of an In Vitro Dissolution Method Based on HPLC Analysis for L-Dopa Release From PLGA Nanoparticles**

Sema ARISOY, Özgün SAYINER, Tansel ÇOMOĞLU; Ankara, Turkey

▼ **The Effects of Thermo-mechanical Aging on Microleakage in Composite Restorations Polymerized Using One New Generation and Two Conventional Led Light Curing Units**

Nazmiye DÖNMEZ, Yeşim ŞEŞEN USLU, Şeyda HERGÜNER SİSO, Ali TOPRAK; İstanbul, Turkey

▼ **The Efficacy of Etlrombopag Treatment in Patients who developed Platelet Engraftment Failure after Allogeneic Stem Cell Transplantation: A Single Center Experience**

Ali ESER, Ayşen TİMURAĞAOĞLU; İstanbul, Turkey

▼ **Report of a Case of Signet Ring Carcinoma Presenting as Gastric Mucosal Thickening: A Diagnostic Dilemma**

Cumali KARATOPRAK, Adem AKÇAKAYA, Hakan ŞENTÜRK, Ganime ÇOBAN, Nurhan ŞAHİN, Hacı Mehmet TÜRK; İstanbul, Turkey

Volume 9 • Issue 1 • January 2021

bezmialemscience.org



## Editor in Chief

### Adem AKÇAKAYA

Department of General Surgery, Bezmialem Vakif University  
School of Medicine, İstanbul, Turkey

## Associate Editors

### Fahri AKBAŞ

Department of Medical Biology, Bezmialem Vakif University  
School of Medicine, İstanbul, Turkey

### Fadlullah AKSOY

Department of Otorhinolaryngology, Bezmialem Vakif  
University School of Medicine, İstanbul, Turkey

### İbrahim AYDOĞDU

Department of Pediatric Surgery, Bezmialem Vakif University  
School of Medicine, İstanbul, Turkey

### Fatemeh BAHADORI

Department of Pharmaceutical Biotechnology, Bezmialem  
Vakif University, School of Pharmacy, İstanbul, Turkey

### Hayrettin DAŞKAYA

Department of Anesthesiology and Reanimation, Faculty of  
Medicine, Bezmialem Vakif University, İstanbul, Turkey

### Remzi DOĞAN

Department of Otorhinolaryngology, Bezmialem Vakif  
University School of Medicine, İstanbul, Turkey

### Bülent DURDU

Department of Infectious Diseases and Clinical Microbiology,  
Bezmialem Vakif University School of Medicine, İstanbul,  
Turkey

### Mehmet Burak GÜNEŞER

Department of Endodontics Bezmialem Vakif University  
Faculty of Dentistry, İstanbul, Turkey

### Muharrem KISKAÇ

Department of Internal Medicine, Bezmialem Vakif University  
School of Medicine, İstanbul, Turkey

### Özlem SU KÜÇÜK

Department of Dermatology, Bezmialem Vakif University  
School of Medicine, İstanbul, Turkey

### Sedat MEYDAN

Department of Anatomy, Bezmialem Vakif University,  
İstanbul, Turkey

### İlker ÖZ

Department of Radyology, Bezmialem Vakif  
University, İstanbul, Turkey  
ORCID: 0000-0002-5014-4972

### Umut BALLI

Department of Periodontology, Bezmialem Vakif  
University, İstanbul, Turkey  
ORCID: 0000-0001-5070-0062

### Hakan SEYİTHANOĞLU

Department of Neurosurgery, Bezmialem Vakif University  
School of Medicine, İstanbul, Turkey

### Yazile SAYIN YAZICI

Department of Nursing, Bezmialem Vakif University Faculty of  
Health Science, İstanbul, Turkey

## Statistics Consultant

### Ömer UYSAL

Department of Biostatistics and Medicine Informatics, Division  
of Basic Medical Sciences, Bezmialem Vakif University School  
of Medicine, İstanbul, Turkey

## Editorial Board

### Abdürrahim KOÇYİĞİT

Department of Medical Biochemistry, Bezmialem Vakif  
University School of Medicine, İstanbul, Turkey

### Ahmet BELCE

Department of Biochemistry, Biruni University School of  
Medicine, İstanbul, Turkey

### Amrita BANERJEE

Department of Pharmaceutical Sciences, North Dakota State  
University School of Pharmacy, Fargo, ND, USA



# BEZMİÂLEM science

## Anne-Catherine ANDRES

Department of Clinical Research, University of Bern School of Medicine, Switzerland

## Artur BEKE

Department of Obstetrics and Gynecology, Semmelweis University School of Medicine, Budapest, Hungary

## Arzu TEZVERGİL MUTLUAY

Department of Prosthetic, University of Turku School of Medicine, Turku, Finland

## Atilla EROĞLU

Department of Thoracic Surgery, Ataturk University School of Medicine, Erzurum, Turkey

## Claudio T. SUPURAN

Department Neuropharma, University of Florence School of Medicine, Firenze, Italy

## Gökçen BAŞARANOĞLU

Department of Anesthesiology and Reanimation, Bezmialem Vakif University School of Medicine, İstanbul, Turkey

## Gülaçtı TOPÇU

Dean of the Faculty of Pharmacy, Bezmialem Vakif University, İstanbul, Turkey

## Hayat ÖNYÜKSEL

Department of Biopharmaceutical Sciences, UIC Faculty of Pharmacy, Illinois, USA

## İsmail MERAL

Department of Medical Physiology, Bezmialem Vakif University, İstanbul, Turkey

## İsmet KIRPINAR

Department of Psychiatry, Bezmialem Vakif University School of Medicine, İstanbul, Turkey

## Jie ZHOU

Department of Anesthesiology, Perioperative and Pain Medicine, Brigham and Women's Hospital, Harvard Medical School, Boston, MA, USA

## Joachim FANDREY

Department of Physiology, Duisburg University School of Medicine, Duisburg, Germany

## Kemal DOLAY

Department of General Surgery, İstinye University School of Medicine, İstanbul, Turkey

## Klaus W. GRAETZ

Department of Cranio-Maxillo-Facial and Oral Surgery, University of Zurich School of Medicine, Zurich, Switzerland

## Martina MUCKENTHALER

Clinic of Pediatric Oncology, University Medical Center of Schleswig-Holstein, Heidelberg, Germany

## Max GASSMAN

Department of Veterinary Physiology, University of Zurich, Institute of Veterinary Physiology, Zurich, Switzerland

## Mukkades EŞREFOĞLU

Department of Histology and Embryology, Bezmialem Vakif University, İstanbul, Turkey

## Oliver ULRICH

Department of Anatomy, University of Zurich School of Medicine, Zurich, Switzerland

## Orhan ÖZTURAN

Department of Otolaryngology, Bezmialem Vakif University School of Medicine Hospital, İstanbul, Turkey

## Özlem DURMAZ

Department of Pediatric Gastroenterology, Hepatology and Nutrition, İstanbul University School of Medicine, İstanbul, Turkey

## Renate GAY

Department of Rheumatology, University of Zurich School of Medicine, Zurich, Switzerland

## Steffen GAY

Department of Rheumatology, University of Zurich School of Medicine, Zurich, Switzerland

## Suhair SUNOQROT

Department of Pharmacy, Al-Zaytoonah University of Jordan School of Pharmacy, Amman, Jordan

## Şahabettin SELEK

Department of Medical Biochemistry, Bezmialem Vakif University School of Medicine, İstanbul, Turkey

## Thomas A. LUTZ

Department of Veterinary Physiology, University of Zurich School of Medicine, Zurich, Switzerland

## Tufan KUTLU

Department of Pediatric Gastroenterology and Hepatology, İstanbul University Cerrahpasa School of Medicine, İstanbul, Turkey

## Ufuk ÇAKATAY

Department of Biochemistry, İstanbul University Cerrahpasa School of Medicine, İstanbul, Turkey

## Ülkan KILIÇ

Department of Medical Biology, Medipol University School of Medicine, İstanbul, Turkey

## Yener YÖRÜK

Department of Thoracic Surgery, Trakya University School of Medicine, Edirne, Turkey

## AIMS AND SCOPE

Bezmialem Science is an independent, unbiased, international online journal that publishes articles in all branches of medicine in accordance with the double-blind peer-review process. The print version of the journal is not available and it is only accessible at [www.bezmialemscience.org](http://www.bezmialemscience.org). The manuscripts published on this web page can be read free of charge and files can be downloaded in PDF format. Four issues are released per year, in January, April, July and October. Publication language is Turkish and English.

Bezmialem Science indexed in Science-Emerging Sources Citation Index, TUBITAK ULAKBİM TR Index, EBSCO, Cinahl, CiteFactor, TürkMedline, Türk Atıf Dizini, İdealOnline, ROOT INDEXING, J-Gate, EuroPub, DOAJ, Hinari, GOALI, ARDI, OARE, AGORA, ProQuest, CABI.

The target population of this journal includes medical academicians, specialists, assistants, and medical students. The aim of the journal is to publish high-ranking original researches in basic and clinical sciences, reviews covering contemporary literature about medical education and practice, reports of rare cases, and manuscripts that would contribute to continuous medical education.

Management of the editorial processes and pursued ethical policies are in accordance with the criteria of International Committee of Medical Journal Editors (ICMJE), World Association of Medical Editors (WAME), Council of Science Editors (CSE), European Association of Science Editors (EASE) and Committee on Publication Ethics (COPE).

### Open Access Policy

This journal provides immediate open access to its content on the principle that making research freely available to the public supports a greater global exchange of knowledge.

Open Access Policy is based on the rules of the Budapest Open Access Initiative (BOAI) <http://www.budapestopenaccessinitiative.org/>. By "open access" to peer-reviewed research literature, we mean its free availability on the public internet, permitting any users to read, download, copy, distribute, print, search, or link to the full texts of these articles, crawl them for indexing, pass them as data to software, or use

them for any other lawful purpose, without financial, legal, or technical barriers other than those inseparable from gaining access to the internet itself. The only constraint on reproduction and distribution, and the only role for copyright in this domain, should be to give authors control over the integrity of their work and the right to be properly acknowledged and cited.

All manuscripts should be submitted over the web page at [www.bezmialemscience.org](http://www.bezmialemscience.org). Instructions for authors, technical issues, and other necessary forms can be accessed over this web page. Authors are responsible for all content of the manuscripts.

All expenses of the Bezmialem Science are covered by Bezmialem Vakif University. Advertisements are welcomed for publication on the web page and all applications in this respect should be made to Galenos.

Bezmialem Vakif University owns the royalty and national and international copyright of all content published in the journal. Other than providing reference to scientific material, permission should be obtained from Bezmialem Vakif University for electronic submission, printing, distribution, any kind of reproduction and reutilization of the materials in electronic format or as printed media.



**Editor: Prof. Dr. Adem AKÇAKAYA**

**Address:** Bezmialem Vakıf Üniversitesi, Adnan Menderes Bulvarı, Vatan Caddesi 34093 Fatih, İstanbul, Türkiye

Phone: +90 (212) 453 17 00

Fax: +90 (212) 533 68 55

E-mail: [info@bezmialemscience.org](mailto:info@bezmialemscience.org)

**Publishing House: GALENOS YAYINEVİ**

**Address:** Molla Gürani Mah. Kaçamak Sk. No: 21/1  
34093 Fındıkzade, İstanbul, Türkiye

Phone: +90 (212) 621 99 25

Fax: +90 (212) 621 99 27

E-mail: [info@galenos.com.tr](mailto:info@galenos.com.tr)/[yayin@galenos.com.tr](mailto:yayin@galenos.com.tr)

## INSTRUCTIONS TO AUTHORS

The journal Bezmialem Science is an international periodical published in electronic format in accordance with the principles of independent, unbiased, and double-blinded peer-review. Four issues are published per year, in January, April, July and October.

The print version of the journal is not available and it is only accessible at [www.bezmialemscience.org](http://www.bezmialemscience.org). The manuscripts on this web page are accessible free of charge and full text PDF files can be downloaded.

Authors should submit manuscripts only to the web page at [www.bezmialemscience.org](http://www.bezmialemscience.org). Manuscripts sent by other means will not be evaluated. Full text of the manuscripts may be in Turkish or in English.

The title, abstract and Keywords in every manuscript should be written both in Turkish and English. However, manuscripts submitted by foreign authors outside of Turkey do not necessarily include Turkish title, abstract and keywords.

Preliminary conditions for the approval of the manuscripts include being original, having a high scientific value and having high citation potential.

Submitted manuscripts should not have been presented or published elsewhere in electronic or printed format. A statement should be included for previous submission to and rejection by another journal. Relaying previous reviewer evaluation reports would accelerate the evaluation process. Name, date and place of the event must be specified if the study has been previously presented at a meeting.

The authors transfer all copyrights of the manuscript relevant to the national and international regulations to the journal as of evaluation process. Copyright Transfer Form signed by all authors should be submitted to the journal while uploading the manuscript through submission system. All financial liability and legal responsibility associated with the copyright of the contained text, table, figure, picture, and all other sorts of content protected by national and international laws belong to the author.

Author Contribution Form should be completed by the corresponding author in order to protect authors' rights and avoid ghost and honorary authorship issues.

All kinds of aids and support received from persons and institutions should be declared and ICMJE Uniform Disclosure Form for Potential Conflicts of Interest should be completed to clarify conflicts of interest issues.

The format of the manuscripts must conform to the journals instructions and to the standards of ICMJE-Recommendations for the Conduct, Reporting, Editing and Publication of Scholarly Work in Medical Journals (updated in December 2016 -<http://www.icmje.org/icmje-recommendations.pdf>) and the presentation of the content must be in accordance with appropriate international

guidelines. CONSORT should be used for the reporting of randomized trials, STROBE for observational studies, STARD for diagnostic studies, PRISMA for systematic reviews and meta-analyses, ARRIVE for animal studies, Care for case reports and TREND for non-randomized behavior and public health intervention studies.

Ethics committee report prepared in accordance with "WMA Declaration of Helsinki-Ethical Principles for Medical Research Involving Human Subjects" and "Guide for the Care and Use of Laboratory Animals" is required for experimental and clinical studies, drug investigations and some case reports. The authors may be asked to submit ethics committee report or a substitute official report, if deemed necessary. In papers reporting the results of experimental studies, after explaining in detail all procedures that the volunteer subjects and patients underwent, a statement should be included in the text indicating that all subjects provided consent for the study. In animal studies, it should be clearly specified how the pain or discomfort has been relieved. Informed consents, name of the ethics committee, issue number and date of the approval document should be written in the Methods section of the main document.

All manuscripts are subject to preliminary evaluation by the Editors. The manuscripts are reviewed for possible plagiarism, replication and duplicated publication during this process. Our journal will impose sanctions in accordance with the guidelines of Committee on Publication Ethics (COPE) in conditions where such non-ethical issues may arise. Subsequently, manuscripts are forwarded to at least 2 independent referees for double-blinded peer-review. The reviewers are selected among independent experts with international publications and citations on the subject of the manuscript. Research articles, systematic reviews and meta-analyses are also evaluated by a statistician. Authors are deemed to have accepted that required revisions are to be made by the Editors provided that this will not make a comprehensive change in the original document.

Upon approval of the manuscript for publication, requests of addition to or removal from the author list or order change will not be accepted.

The manuscripts should be prepared with Microsoft Office Word and should comply with the following specifications.

### Title Page

For each type of manuscript, title page should be uploaded through online submission system as a separate Microsoft Word document that includes Turkish and English title of the manuscript, names of the authors and latest academic degrees, name of the department and institution, city, and country. If the study has been conducted in more than one center, affiliation of each author must be specified using symbols. Correspondence address should include name of the corresponding author, postal address, e-mail address, phone and fax numbers. Name, date and place of



## INSTRUCTIONS TO AUTHORS

the meeting must be specified if the study has been presented in a previous meeting. Disclosure of Conflict of Interest, Disclosure of Institutional and Financial Support, Author Contribution and Acknowledgments should be included in this page.

**Original Research:** Abstract should be written in Turkish and English, and be structured with Objective, Methods, Results and Conclusion sections. Abstract should not exceed 250 words. Keywords must conform to Medical Subject Headings (MeSH) terms prepared by National Library of Medicine (NLM) and contain minimum 3 and maximum 6 items; keywords should be written in Turkish and English just below the abstract. Main text should contain Introduction, Methods, Results, Discussion, Limitations of the Study, Conclusion, References, Tables, Figures and Images, and should be limited to 5000 words excluding references. References not exceeding 50 would be acceptable.

Statistical analyses must be conducted in accordance with the international statistical reporting standards (Altman DG, Gore SM, Gardner MJ, Pocock SJ. Statistical guidelines for contributors to medical journals. *Br Med J* 1983; 7; 1489-93). Statistical analyses should be written as a subheading under the Methods section and statistical software must certainly be specified. Data must be expressed as mean±standard deviation when parametric tests are used to compare continuous variables. Data must be expressed as median (minimum-maximum) and percentiles (25th and 75th percentiles) when nonparametric tests are used. In advanced and complicated statistical analyses, relative risk (RR), odds ratio (OR) and hazard ratio (HR) must be supported by confidence intervals (CI) and p values.

**Editorial Comments:** Editorial comments aim at providing brief critical commentary by the reviewers having expertise or with high reputation on the topic of the research article published in the journal. Authors are selected and invited by the journal. Abstract, Keywords, Tables, Figures, Images and other media are not included. Main text should not include subheadings and be limited to maximum 1500 words; references should be limited to 15.

**Review:** Reviews which are prepared by authors who have extensive knowledge on a particular field and whose scientific background has been translated into high volume of publication and higher citation potential are taken under review. The authors may be invited by the journal. Reviews should be describing, discussing and evaluating the current level of knowledge or topic used in the clinical practice and should guide future studies. The manuscript contains unstructured abstract not exceeding 250 words. The manuscript should include minimum 3 and maximum 6 keywords which conform to Medical Subject Headings (MeSH) terms prepared by National Library of Medicine (NLM). Main text should contain Introduction, Clinical and Research Consequences and Conclusion sections. Main text should not exceed 5000 words and the references should be limited to 50.

The originality of the visual media contained in the reviews should be confirmed by submitting a letter to the journal. The original versions of the printed or electronic copies of the images adapted from a published source should be cited properly and the written permission obtained from the copyright holder (publisher, journal or authors) should be forwarded to the journal.

**Case Report:** There is limited space for case reports in the journal and reports on rare cases or conditions that constitute challenges in the diagnosis and treatment, those offering new therapies or revealing knowledge not included in the books, and interesting and educative case reports are accepted for publication. The abstract should be unstructured and should not exceed 250 words. The manuscript should include minimum 3 and maximum 6 keywords which conform to Medical Subject Headings (MeSH) terms prepared by National Library of Medicine (NLM). The text should include Introduction, Case Report, Discussion, Conclusion, References, Tables, Figures and Images sections, and should be limited to 700 words. References should be limited to 10.

**Letter to the Editor:** Includes manuscripts discussing important parts, overlooked aspects or lacking parts of a previously published article. Articles on the subjects within the scope of the journal that might attract the readers' attention, particularly educative cases can also be submitted in the form of "Letter to the Editor". Readers can also present their comments on the published manuscripts in the form of "Letter to the Editor". Abstract, Keywords, Tables, Figures, Images and other media are not included. The text should be unstructured and should not exceed 500 words; references are limited to 5. Volume, year, issue, page numbers, and title of the manuscript being commented on, as well as the name of the authors should be clearly specified, should be listed in the references and cited within the text.

**Images in Clinical Practices:** Our journal accepts original high quality images related to the cases which we have come across in clinical practices, that cites the importance or infrequency of the topic, makes the visual quality stand out and present important information that should be shared in academic platforms. Titles of the images should not exceed 10 words and should be provided both in English and Turkish. Images can be signed by no more than 3 authors. Figure legends are limited to 200 words and the number of figures are limited to 3. Video submissions will not be considered.

### Special Considerations

Names of the corresponding author and other authors, affiliations, and other information on the study centers should not be included in any part of the manuscript or images in order to allow double-blinded peer-review. Such information should be uploaded to the relevant section of the online submission system and separately added to the title page.

## INSTRUCTIONS TO AUTHORS

All tables, figures, graphs and other visual media must be numbered in order of citation within the text and must not disclose the names of the patients, doctors or institutions. Tables must be prepared in a Microsoft Office Word document using "Insert Table" command and be placed at the end of the references section in the main document. Tables should not be submitted in JPEG, TIFF or other visual formats. In microscopic images, magnification and staining techniques must be specified in addition to figure captions. All images should be in high resolution with minimum 300 dpi. Lines in the graphs must be in adequate thickness. Therefore, loss of details would be minimal if reduction is needed during press. Width must be 9 cm or 18 cm. It would be more appropriate if the drawings are prepared by the professionals. Gray color should be avoided. Abbreviations must be explained in alphabetical order at the bottom. Roman numerals should be avoided while numbering the Tables and Figures, or while citing the tables in the text. Decimal points in the text, tables and figures should be separated by comma in Turkish sections and by dots in English sections. Particularly, tables should be explanatory for the text and should not duplicate the data given in the text.

Pharmaceuticals should be specified with their generic names, and medical products and devices should be identified with brand name and company name, city and country.

### References

References should be numbered in the order they are cited. Only published data or manuscripts accepted for publication and recent data should be included. Inaccessible data sources and those not indexed in any database should be omitted. Titles of journals should be abbreviated in accordance with Index Medicus-NLM Style (Patrias K. Citing medicine: the NLM style guide for authors, editors, and publishers [Internet]. 2nd ed. Wendling DL, technical editor. Bethesda (MD): National Library of Medicine (US); 2007 - [updated 2011 Sep 15; cited Year Month Day] (<http://www.nlm.nih.gov/citingmedicine>). All authors should be listed if an article has six or less authors; if an article has more than six authors, first six authors are listed and the rest is represented by "ve ark." in Turkish articles and by "et al." in English articles. Reference format and punctuation should be as in the following examples.

**Journal:** Muller C, Buttner HJ, Peterson J, Roskomun H. A randomized comparison of clopidogrel and aspirin versus ticlopidine and aspirin after placement of coronary artery stents. *Circulation* 2000; 101: 590-3.

**Book Section:** Sherry S. Detection of thrombi. In: Strauss HE, Pitt B, James AE, editors. *Cardiovascular Medicine*. St Louis: Mosby; 1974.p.273-85.

**Books with Single Author:** Cohn PF. *Silent myocardial ischemia and infarction*. 3rd ed. New York: Marcel Dekker; 1993.

**Editor(s) as author:** Norman IJ, Redfern SJ, editors. *Mental health care for elderly people*. New York: Churchill Livingstone; 1996.

**Conference Proceedings:** Bengissson S. Sothemin BG. Enforcement of data protection, privacy and security in medical informatics. In: Lun KC, Degoulet P, Piemme TE, Rienhoff O, editors. *MEDINFO 92. Proceedings of the 7th World Congress on Medical Informatics*; 1992 Sept 6-10; Geneva, Switzerland. Amsterdam: North-Holland; 1992.p.1561-5.

**Scientific or Technical Report:** Smith P. Golladay K. Payment for durable medical equipment billed during skilled nursing facility stays. Final report. Dallas (TX) Dept. of Health and Human Services (US). Office of Evaluation and Inspections; 1994 Oct. Report No: HHSIGOE 169200860.

**Thesis:** Kaplan SI. Post-hospital home health care: the elderly access and utilization (dissertation). St. Louis (MO): Washington Univ. 1995.

**Manuscripts accepted for publication, not published yet:** Leshner AI. Molecular mechanisms of cocaine addiction. *N Engl J Med* In press 1997.

**Epub ahead of print Articles:** Aksu HU, Ertürk M, Gül M, Uslu N. Successful treatment of a patient with pulmonary embolism and biatrial thrombus. *Anadolu Kardiyol Derg* 2012 Dec 26. doi: 10.5152/akd.2013.062. [Epub ahead of print]

**Manuscripts published in electronic format:** Morse SS. Factors in the emergence of infectious diseases. *Emerg Infect Dis* (serial online) 1995 Jan-Mar (cited 1996 June 5): 1(1): (24 screens). Available from: URL: <http://www.cdc.gov/ncidodl/ELD/cid.htm>.

The latest status of the submitted manuscripts and other information about the journal can be accessed at [www.bezmialemscience.org](http://www.bezmialemscience.org). Furthermore, contact details of the Editorial Office and Publisher are provided below for correspondence with the journal in every respect.

### Editor: Prof. Dr. Adem AKÇAKAYA

**Address :** Bezmialem Vakıf Üniversitesi, Adnan Menderes Bulvarı, Vatan Caddesi 34093 Fatih, İstanbul, Türkiye

Phone: +90 (212) 453 17 00

Fax: +90 (212) 533 68 55

E-mail: [info@bezmialemscience.org](mailto:info@bezmialemscience.org)

### Publishing House: GALENOS YAYINEVİ

Address: Molla Gürani Mah. Kaçamak Sk. No: 21/1 34093 Fındıkzade, İstanbul, Türkiye

Phone: +90 (212) 621 99 25

Fax: +90 (212) 621 99 27

E-mail: [info@galenos.com.tr](mailto:info@galenos.com.tr)/[yayin@galenos.com.tr](mailto:yayin@galenos.com.tr)

## CONTENTS

---

### Commentary

1 Problems of Healthcare Professionals in COVID-19 Pandemic

Prof. Dr. Adem AKÇAKAYA; İstanbul, Turkey

---

### Original Articles

3 Effect of Repeated Movements on Motion Perception and Motor Learning of Dominant and Non-dominant Upper Extremity of Healthy Individuals

Deniz KOCAMAZ, Songül ATASAVUN UYSAL, Elif DİNLER, Tuğba BADAT, Begümhan TURHAN, Yavuz YAKUT; Gaziantep, Ankara, Turkey

---

9 Development and Validation of an *In Vitro* Dissolution Method Based on HPLC Analysis for L-Dopa Release From PLGA Nanoparticles

Sema ARISOY, Özgün SAYINER, Tansel ÇOMOĞLU; Ankara, Turkey

---

20 Spectrophotometric Determination of Erdosteine at Capsule Dosage Forms

Cem ÖNAL, Demet DİNÇEL; İstanbul, Turkey

---

25 Cyclic Fatigue Resistance of Biorace Nickel-titanium File with Variable Taper after Immersion in Sodium Hypochloride

Burçin ARICAN, Ayfer ATAV ATEŞ; İstanbul, Turkey

---

29 Pancreatic Tumors in Children

Hasan Özkan GEZER, Abdülkerim TEMİZ, Semire EZER, Emine İNCE, Nalan YAZICI, Şenay DEMİR, Bermal HASBAY, Pelin OĞUZKURT; Adana, Turkey

---

35 Analysis of Personal, Environmental, and Occupational Factors Affecting the Activity Performance of Disabled Drivers

Orkun Tahir ARAN, Hülya KAYIHAN; Ankara, İstanbul, Turkey

---

41 A Liquid Chromatographic Analysis of Gemifloxacin in Pharmaceutical Preparations Using 4-bromomethyl-7-methoxycoumarin Reagent

Cem ÖNAL; İstanbul, Turkey

---

46 Effect of Birth Ball Exercising for the Management of Childbirth Pain in Turkish Women

Demet AKTAŞ, Sevil KOLSUZ, Mukadder ERTUĞRUL, Elif Gizem BEŞİRLİ, Fatma Reyhan GÜNDOĞAN; Çankırı, Zonguldak, Ankara, Turkey

---



## CONTENTS

---

- 53 Comparison of Mother-Infant Relationship in Turkish Primiparous Women in Accordance with Vajinal Birth and Cesarean Section  
Elif Zahide ÇELEBİ, Filiz OKUMUŞ; İstanbul, Ankara, Turkey
- 
- 61 Turkish Version of the Multidimensional Index of Life Quality in Patients with Acute Coronary Syndrome  
ŞEYMA DEMİR, ZEYNEP ÖZER; Bolu, Antalya, Turkey
- 
- 68 Effect of Mouthrinses on Water Sorption and Solubility of Flouride-Releasing Restorative Materials  
Neslihan ÖZVEREN, Ezgi BALTACI, Sinem BATUR KARA; Edirne, Turkey
- 
- 75 Prevalence of Pressure Injuries and Risk Factors in Long-Term Surgical Procedures  
Cemile AKAN, Yazile YAZICI SAYIN; İstanbul, Turkey
- 
- 84 Comparison of Small-diameter-hole and Traditional Microfracture in Cartilage Repair and the Effect of Adding a Hyaluronic Acid-based Acellular Matrix Scaffold: An Animal Study  
Vahdet UÇAN, Fatih YILDIZ, Nuh Mehmet ELMADAĞ, Gökçer UZER, Yunus GÜZEL, Olgu Enis TOK, Mukaddes EŞREFOĞLU; İstanbul, Ordu, Turkey
- 
- 91 The Effects of Thermo-mechanical Aging on Microleakage in Composite Restorations Polymerized Using One New Generation and Two Conventional Led Light Curing Units  
Nazmiye DÖNMEZ, Yeşim ŞEŞEN USLU, Şeyda HERGÜNER SİSO, Ali TOPRAK; İstanbul, Turkey
- 
- 98 The Efficacy of Eltrombopag Treatment in Patients who developed Platelet Engraftment Failure after Allogeneic Stem Cell Transplantation: A Single Center Experience  
Ali ESER, Ayşen TİMURAĞAOĞLU; İstanbul, Turkey
- 
- 106 Comparison of Dosage Loss Between Medications Crushed with Two Different Methods by Two Nurses: An *In Vitro* Study  
Betül TOSUN, Nursemin ÜNAL, Nurten ÖZEN3, Filiz ATALAY; Gaziantep, Ankara, İstanbul, Turkey
- 

## Review

- 112 A Current View of Care of High Risk Pregnancy  
Büşra YILMAZ, Ümran OSKAY; İstanbul, Turkey
- 

## Case Report

- 120 Report of a Case of Signet Ring Carcinoma Presenting as Gastric Mucosal Thickening: A Diagnostic Dilemma  
Cumali KARATOPRAK, Adem AKÇAKAYA, Hakan ŞENTÜRK, Ganime ÇOBAN, Nurhan ŞAHİN, Hacı Mehmet TÜRK; İstanbul, Turkey
-